

Clerk: Governance Support
Telephone: 01803 207013
E-mail address: governance.support@torbay.gov.uk
Date: Thursday, 04 March 2021

Governance Support
Town Hall
Castle Circus
Torquay
TQ1 3DR

Dear Member

**CHILDREN AND YOUNG PEOPLE'S OVERVIEW AND SCRUTINY BOARD - MONDAY,
1 MARCH 2021**

I am now able to enclose, for consideration at the Monday, 1 March 2021 meeting of the Children and Young People's Overview and Scrutiny Board, the following reports that were unavailable when the agenda was printed.

| Agenda No | Item | Page |
|------------------|--|------------------|
| 5. | Children in Care Council and Pledge | (Pages 72 - 91) |
| 6. | Ensuring Children receive the right support at the right time | (Pages 92 - 101) |

Yours sincerely

Governance Support
Clerk

THE CARED FOR COMMUNITY AND THE PLEDGE



The Team – Eric, Sophie and Jenny
with Emily helping in the background

The Community and Children in Care Council

- As we know all Local Authorities have a Statutory duty to gather the voices of young people in care or for those who have left care
- This is often done through a Children in Care Council model
- Local Authorities are often referred to as the **Corporate Parents** of children and young people in care and those who have left care
- “The critical questions that LA’s should ask when adopting such an approach is... *is this good enough for my child?*” *

The Corporate Parenting Principles *

- To act in the best interests, and promote the physical and mental health and wellbeing, *of those children and young people*
- To encourage *those children and young people* to express their views, wishes and feelings
- To take into account the views, wishes and feelings of those children and young people

The Corporate Parenting Principles

Cont'd

Page 75

- To help those children and young people gain access to and make best use of, Services provided by the local authority and it's relevant partners
- To promote high aspirations, and seek to secure the best outcomes, for those children and young people
- For those children and young people to be safe, and for stability in their home lives, relationships and education or work; and
- To prepare those children and young people for adulthood and independent living.

* Applying Corporate Parenting Principles Feb 2018

The Children in Care Council are part of the Cared for Community. They represent young people in care and those leaving care and work with the Corporate Parenting Board.

The Pledge from Torbay Council and Partners is saying as Corporate Parents this is our Promise to you.

The Pledge has 2 parts - what the young people say they would like and what the LA and Partners will do to ensure they meet these.

The Pledge applies to everyone supporting young people in care and those who have left care.

Going back to The Community

- The Cared for Community enables young people aged 8 to 18 years to take part regularly, occasionally or virtually
- Each young person has a team member they can go to for support and who checks in on them, this person also talks with the foster carer/s and Provider staff regularly

The Community is the place where young people can feel part of something, but have the choice to be involved in any active decision making on their terms

- It allows young people to have their voice, but have fun alongside of this

- In February 2020 the Youth Service and the Young Carers Service came out of the LA into a Youth Trust – Commissioned by the Council
- Both Teams have led on delivering or co- delivering the Children in Care Council over the years and have found that young people are not keen on structured Council meetings.

Page 78 • The Community Model came into affect following the Covid 19 restrictions and enables young people to be part of the Children in Care Council if they want to. We can also consult them when they are taking part in Community activities.

- There are currently 22 young people in the Community, with new members joining, despite the challenges of being often online

Why a
Community
Model?

Since March 2020

- The Community hosted a Slogan and Logo competition
- The Children in Care Council hosted the Consultation about the Pledge and a Virtual Visits Consultation for the Dfe
- The Community members learnt to paddle board and do archery, bushcraft and coasteering
- The Children in Care Council reviewed the Pledge and recorded 2 podcasts about it, including interviewing the Corporate Parenting Board (with Sound Communities)
- The Community recorded a Cared For Community FM broadcast piece (with Sound Communities)
- The Community recorded a Spooky Music piece at Lupton Orchard and created Winter and Christmas music ensembles (with Moor to Sea Music and South West Family Values)
- The Community started a 2 part *Language that Cares project this half term - as part of a Devon wide video and creating their own film* (With Sound Communities and with a member of the CPB board present)
- Community members have taken part in 2 x 2 *Roots to Rise* Outdoor therapy days at Lupton Orchard this and last half term (With The Apricot Centre and South West Family Values)

CARED FOR COMMUNITY

Understanding who
we are together

Our
New
Names
and
Logos

Junior and Senior Clubs
Virtual Space

Page 80

The Circle

THE
CIRCLE

Young People in
Care Council

Are all monthly



Open mic for
care leavers

is starting in March for Young people 16+

CARED FOR COMMUNITY

Understanding who
we are together

Late Winter Programme 2021

The Cared for Community is open to all children and young people aged 8 to 18 years who are cared for by Torbay Council wherever you live

Why not come and have fun in person at our monthly Junior and Senior Clubs or through our Virtual Space?

The Circle is your chance to have your say and meet with decision makers



Please ask to see our *My Voice* programme if you are a care experienced adult up to 25 years and want to be part of making a difference



Please get in touch....

Email us at

admin@torbayyouthtrust.org.uk

Telephone us on 07920806455

Torbay Youth Trust Facebook

New
Programme

Saturday 13th March
Club - Seniors and Juniors **2.30pm to 3.30pm**
Sports Competition/ Music quiz & Design Cared for Merch The YMCA
Paignton/ On Zoom

Tuesday 16th March
Virtual Space **5pm to 6pm**
Come along and get involved, this is your time so let's be creative!
Join us for a catch up, quizzes, games, music & more!
Zoom/Discord

Tuesday 23rd March
The Circle 5pm to 6pm Language Project
The YMCA Paignton /On Zoom

Saturday 10th April
Club - Seniors and Juniors **2.30pm to 3.30pm**
Multi Sports & making Easter Nests The YMCA Paignton/ On Zoom

Tuesday 20th April
Virtual Space **5pm to 6pm**
Come along and get involved, this is your time so let's be creative!
Join us for a catch up, quizzes, games, music & more!
Zoom/Discord

Tuesday 27th April
The Circle 5pm to 6pm New Projects
The YMCA Paignton/on Zoom



*There's lots to do and you are part of
deciding what is on offer
We will be in person or online
depending on current advice. Come
along when you like .*

Important information Just to keep you safe!

Please ask for a consent form. All in person sessions are subject to change due to Covid 19 restrictions and we may need to do them online. Face coverings are needed for indoor and outdoor sessions unless you are exempt. Please read the H&S information that is provided including meeting points and times.

The Pledge is the Promise to all cared for and care experienced children and young people up to the age of 25 years.

The Children in Care Council reviewed the previous Pledge based on the Consultation results from their peers, including the language.

Let's look at the proposed Pledge 2021 to 2022 in the next section

OUR PROMISE TO YOU

The Torbay pledge to cared
for and care experienced
children/young people
2021 – 2022

BEING IN CARE

YOU SAID



OUR PLEDGE

- Explain things to us in a way that we can understand
- Help us to feel comfortable and listen to us
- Treat us as you would your own child
- Always involve us where we want it, so we don't need to ask
- Find out about our story first so we don't have to repeat it, unless we want to

- We will come prepared, and we will listen
- Your views will come first, but we will be honest about what we can do
- We will ask you about what your goals are and support you to achieve them
- We will work with your carers to ensure your home is the best it can be
- We will explain your rights using language that is easily understood
- We will use Language that Cares*

*Language That Cares -TACT Fostering & Adoption (tactcare.org.uk)

OUR WELL-BEING

YOU SAID



OUR PLEDGE

- Help us to feel safe, secure and supported
- Support us to find a balance of healthy choices and informed decisions
- Help us to feel good about ourselves and loved
- Support us to be resilient, able to deal with uncertainty and to learn from our own experiences

- We will work together to help to support your sense of well-being and personal identity
- We will work together to keep you safe (safety planning)
- We will develop a plan to ensure you are healthy and wanting to have good choices called a Personal Health Plan
- We will ensure you have support and advice, so you are less likely to take certain risks or be open to exploitation by others
- We will support you to access regular health and dental checks and any appointments or treatment you may need –virtually and in person

OUR SUPPORT AND LEARNING

YOU SAID → OUR PLEDGE

- Treat us just like any other children and young people, and as individuals
- We have our own history, but it may or may not define us
- Help us to stay at our current school or college if we like it - if we have to move, please provide us with clear reasons why
- Help us to enjoy our learning

- We will respect your privacy and work to ensure that you are not singled out or bullied at school, college, or in any other setting
- We will work closely with your school, college or provider and offer you easy to understand reasons for any changes
- We will always listen and take your views into account
- We will develop a Personal Education Plan of the things you do in school, so you are helped to do well
- We will use our training to be thoughtful about the challenges you have faced

OUR TIME

YOU SAID



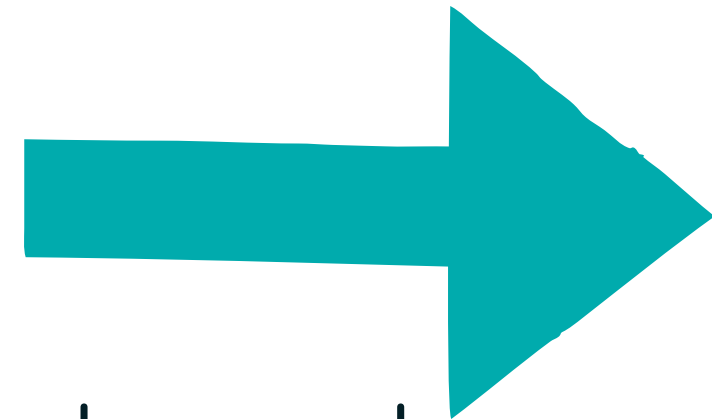
OUR PLEDGE

- Support us to find activities that enable us to have fun, be creative and have our say
- Respect our relationships with any family and friends we may have, including if we have any brothers and sisters who may not live with us
- Please enable us to have choices about any family time or social time that we want
- Arrange activities and any family time we may have in advance and to fit it around the things that we like

- We will work with your carers to ensure you have opportunities that you enjoy and enable you to have your voice if you want to
- We will plan visits in advance and involve you in those plans
- We will help you to stay in contact with any family you may have if you want that and explain the reasons if this is not possible

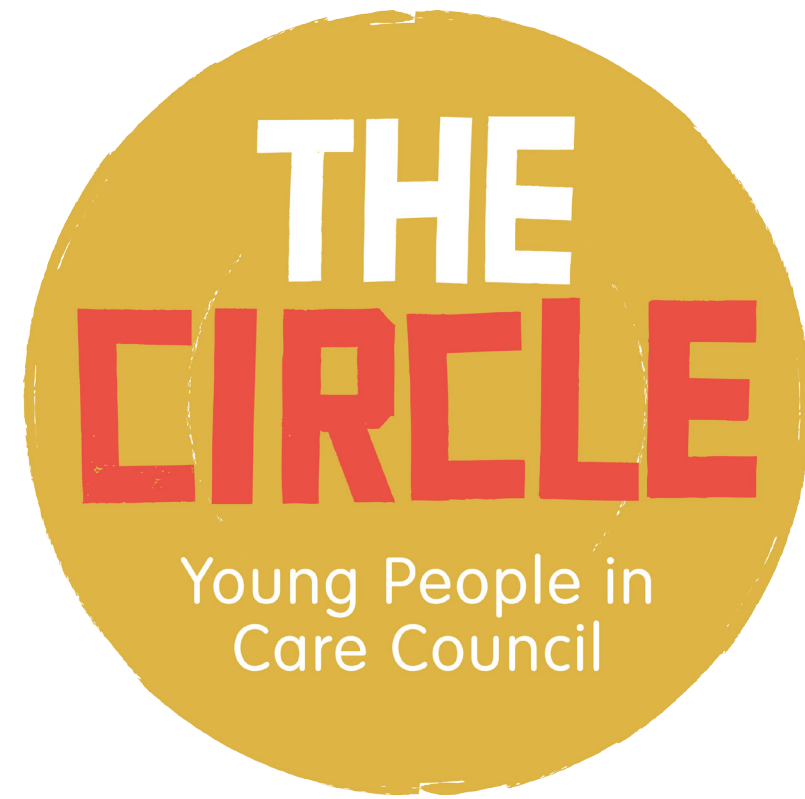
OUR FUTURE

YOU SAID



OUR PLEDGE

- Please be positive about our lives and our goals
 - Support us to grow and become independent as we get older
 - Give us guidance when we want it, when we don't just let us know you are there for us
 - Support us to become confident and equip us to deal with challenges, but allow us the freedom of our own direction too
 - Let us fail sometimes, as everyone does, but celebrate our talents and skills
- We will support you to know that challenges and uncertainty are part of life and growth
 - We will celebrate your achievements with you in the ways that you would like
 - We will encourage and support you to take up opportunities in education, employment and training until the age of at least 21, in ways that suit you
 - We will work with you to develop the life skills we all need to achieve our goals and have the best opportunities for the future



Your chance to have your say and meet with decision makers

The Pledge has been reviewed by The Circle as part of a Torbay wide (and out of area) consultation with young people in care and care experienced adults. Thank you for all your contributions.

The Cared for Community and The Circle are delivered by Torbay Youth Trust as part of our commissioned work for Torbay Council.

The Children in Care Community is open to all children and young people aged 8 to 18 years who are cared for by Torbay Council, wherever you live. You are welcome to be involved and have some fun regularly, occasionally or online through our monthly Clubs, Virtual Space and The Circle.

The Circle is Your chance to have your say and meet with decision makers.

My Voice is a new group for young people aged 16+ years and is your chance to get involved in social action, explore your aspirations for the future and have your voice.



Understanding who
we are together



Open mic for
care leavers

PLEASE
GET
IN TOUCH

Torbay Youth Trust
07920806455
admin@torbayyouthtrust.org.uk
www.torbayyouthtrust.org.uk





Shaping the Future of Early Help in Torbay

Working together to bring a partnership model for delivering Early Help to life

Mark Gray | February 2021

Peopletoo: Our review of the approach to Early Help

- Following a review of Torbay's children's services in its wider context in 2019, Peopletoo were commissioned by Torbay County Council to undertake a focused review of the approach to Early Help.
- The previous review highlighted the significant dependencies between an effective Early Help offer and the effective reduction of the need for social care intervention. Increasing numbers of Children Looked After had put the placement budget and local placement provision under considerable pressure, leading to an increase in the usage of more costly and out of borough residential provision.
- The outcome of this deeper dive review was a proposed new Partnership Model of Early Help. Peopletoo have since been supporting early implementation of the new model.

Our review of Early Help – recap of key activities

Summer 2020 - date

Page 94



Partnership engagement
– 1:1 meetings with a range of partner organisations across the public and voluntary sector.



1:1 meetings with key Officers and Services within Torbay council.



Partnership engagement events exploring contributions to early help, strengths and challenges and opportunities and ideas for change.



Ongoing test and challenge of the developing partnership model for delivering early help with key stakeholders.

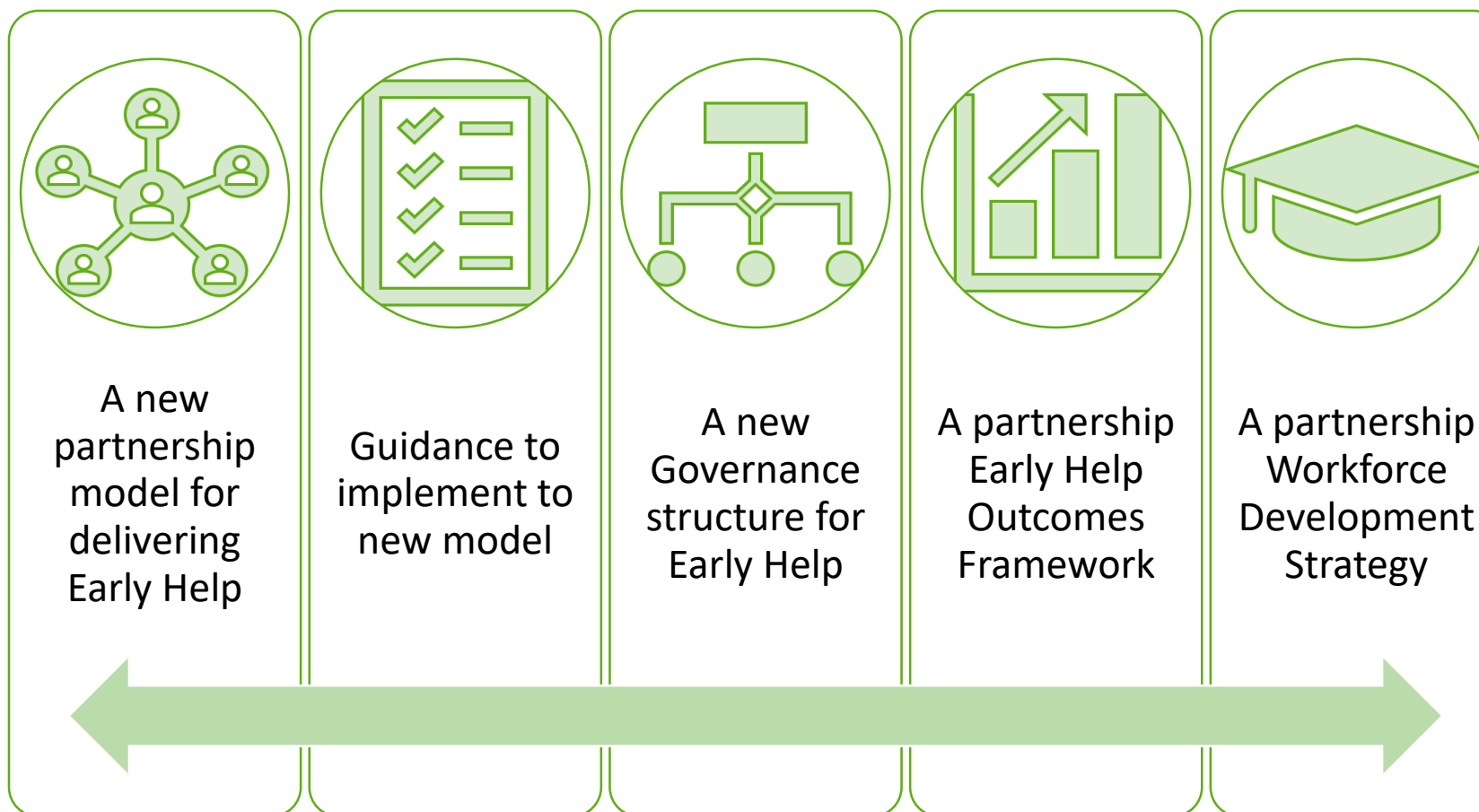


In-depth review and research of best practice.



Feedback of key findings and recommendations to Torbay's senior leadership team.

Products from this review



A new model for delivering early help

- A partnership model for delivering Early Help is to be developed. This model will clearly define what it is we mean when we talk about early help and it will recognise the contributions that all partners make to supporting children and families.
- It is recommended that the Torbay partnership develop a hub and spoke model delivered by integrated early help locality teams. – these will be based in Torbay, Brixham & Paignton
- The 'old' CAF Mentor role will be re-introduced. This will focus on assisting partners to support children and families at a low level, without the need for an Early Help Assessment, and without making a referral to the Integrated Team.
 - Family Support Workers will provide this mentorship role and will be the first point of contact for wider partners who may need advice and support in enabling families to access early help.
 - This role will have a “social prescriber / community connector” function which links community-based provision to the partner, to support them in helping and enabling the family.

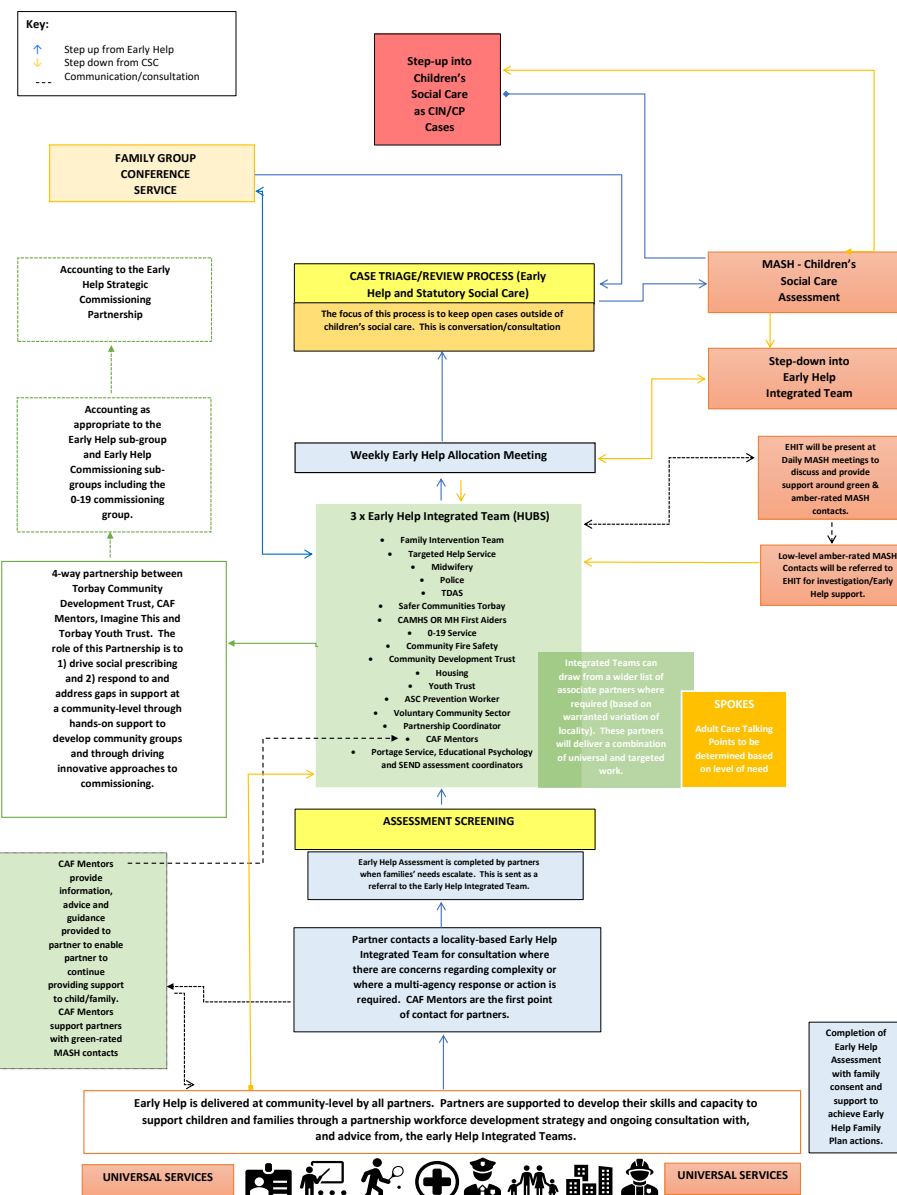
A new model for delivering early help

- This new model will require the development of a strong partnership between Torbay Community Development Trust, Torbay Youth Development Trust, Family Support Workers and the wider Voluntary Community Sector via Imagine This.
 - The purpose of this partnership is to a) drive the social prescribing model and b) respond to, and address, gaps in support at a community-level.
- The integrated teams themselves will be located in community 'hubs' which will be identified based on the level of community need and based on family footfall to ensure that services are located in the places that matter most to children and families.
 - To support the identification of potential hub locations, we are currently undertaking extensive mapping of community services and community needs and talking to partners about how we may enable the relationships to deliver the model
- The hub and spoke model of Early Help will also enable stronger links between children's services and adult's services, providing opportunity to work in a more holistic, strengths-based way with the whole family, with opportunities to 'hot-desk' and base services in Adult Care Talking Points across the Bay area.

A new model for delivering early help

- The model will provide all partners with a supportive, consultative network that promotes strong working relationships and shared responsibility for children and families. This model will support a shift in culture away from referrals and hand-offs, and will create a culture of shared responsibility, shared ownership and support for one another as individuals and professionals.
- When partners need input and support from the Family Support Workers as early help mentors, partners will need to complete an Early Help assessment, providing as much information as possible to ensure that the early help integrated team can more quickly decide and advise on the most appropriate referral pathway for the family.
- The model will be aligned to the Thrive framework, and partners will be supported by family support workers and senior managers within children's social care in the planning and delivery of TAF plans with the Early Help Integrated Team providing intensive support when families do need more help.
- The model will provide safe and effective step-up, step-down pathways between universal services, early help, targeted help and statutory children's social care. There will be mutual agreement across the partnership before cases are stepped-up/down to ensure that the family's plan, goals and aspirations are understood, and to ensure that families have received all of the help that they possibly can before escalating cases into children's social care.

Appendix 1: Shaping the Future of Early Help in Torbay – an Integrated, Locality-based model



How the Early Help Model Practically support the Health and Well Being Strategy

How can the Early Help Model Support the Health and Well Being Strategy?

Governance and Reporting

- Establishing a reporting line through the Health and Well Being Board to ensure that we are helping to meet their priorities
- Ensuring a clarity between the Early Help Implementation Board and the 0-19 Partnership and a way forward to reduce duplication and make best use of partners' time

Practical Working Together

- Working closely with the 0-19 Service to ensure that it is fully part of the Integrated Locality Team Model
- Building in trauma-informed and take account of Adverse Childhood Experiences
- Specifically contributing to the domestic abuse agenda
- Embedding the Thrive Model to promote work around Emotional Health and Well Being
- Building upon the Resilience Framework to support a strengths based approach to assessment / pre-assessment
- Taking Public Health data and intelligence to help set priorities for Early Help but also in evaluating the effectiveness of it

